

MIRROR PRODUCT BROCHURE

General Information

- Mirrors are extremely fragile, please transport and handle with care.
- This product should be installed by a licenced electrician.
- Ensure main power is off before installation.
- Do not install within 600mm of direct wet area contact.
(ie. 600mm from bath or open shower)

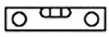
To electrician: Please ensure a copy of the product brochure is left with the end user for future reference.

Thank you on the purchase of our mirror, we hope you and your family enjoy our new product and consider us for any future project. All of our products have been manufactured under the highest standards of quality and workmanship.

Mirror Installation Instruction

Please refer to the product of your purchase for the specific configuration

Tools



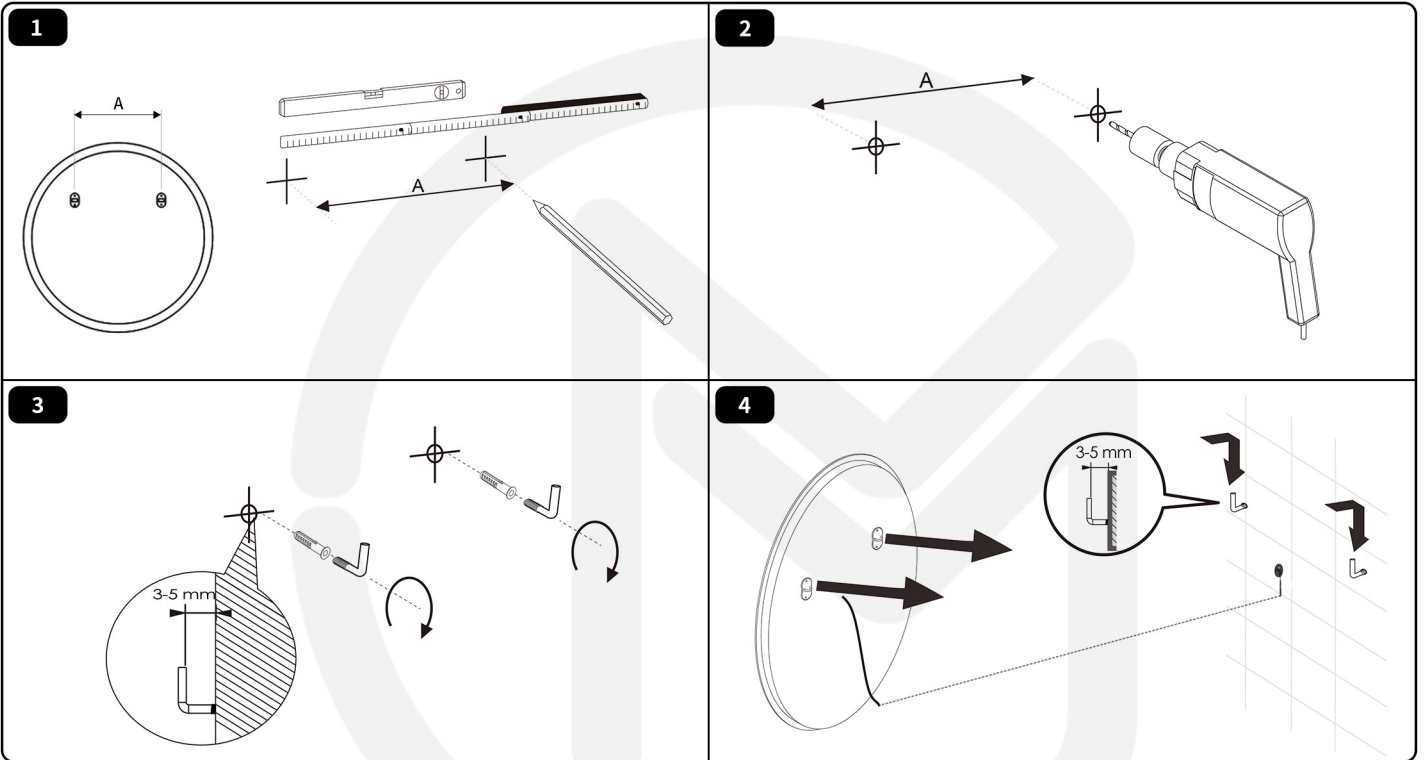
Products

Mirror

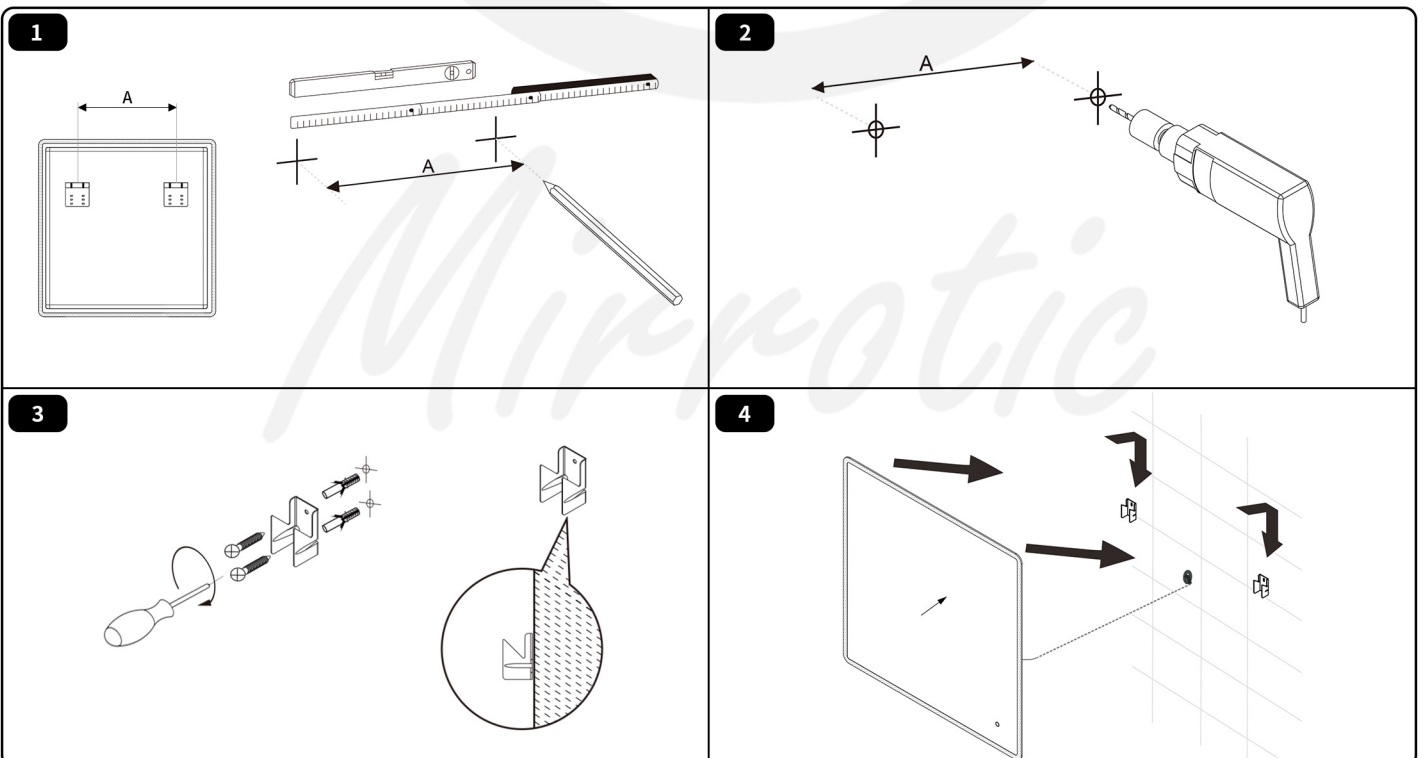
&



Method A



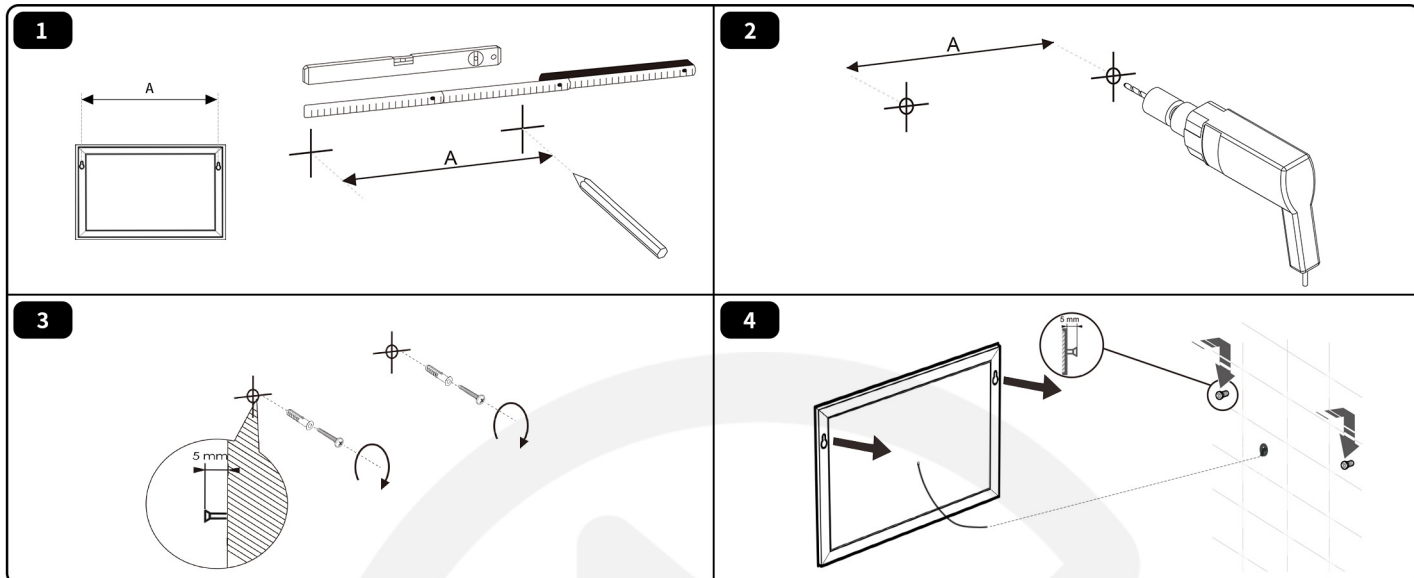
Method B



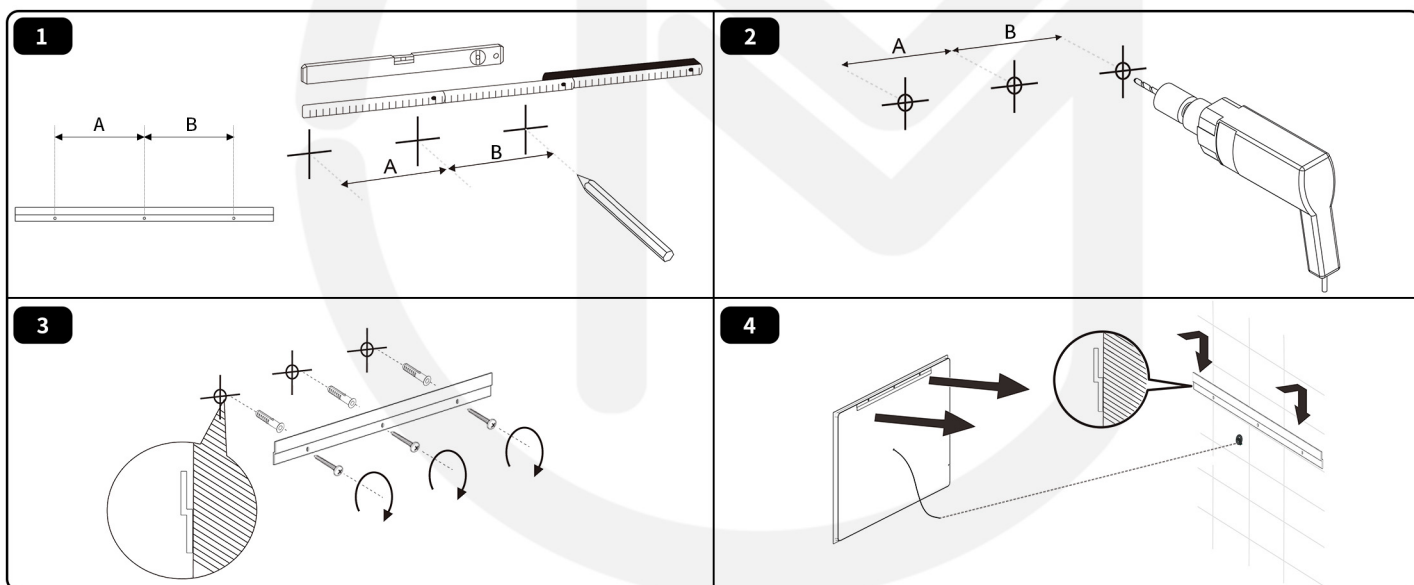
WARNING

Make sure the wires are connected correctly.

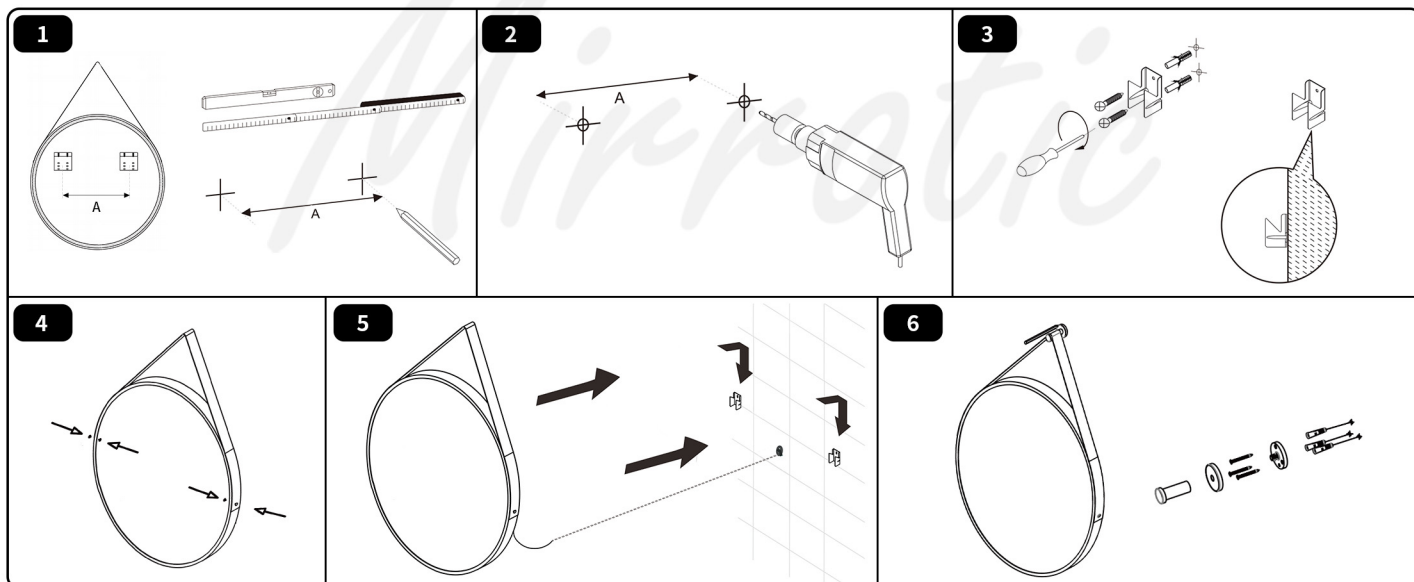
Method C



Method D



Method E



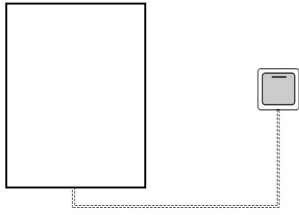
WARNING

Make sure the wires are connected correctly.

Mirror Operation Instruction

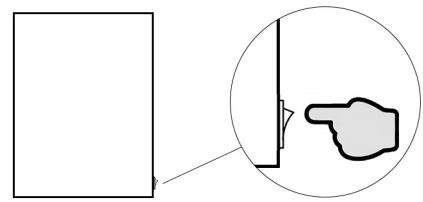
Please refer to the product of your purchase for the specific configuration

Wall Switch



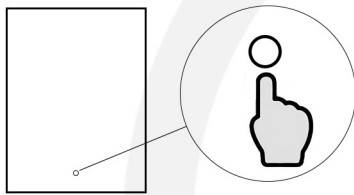
Refer to your wall switch manual for control.

Button Switch



Press to turn on & off.

Touch Sensor



ON/OFF

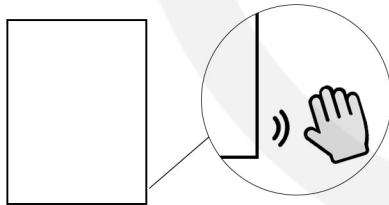


Apply a single touch for on/off.



Touch/hold for brightness/color temperature.

IR Sensor



ON/OFF



Apply a single hand movement for on/off.



Hand movement/keep still for brightness/color temperature.

Do not place any object within 15cm from the switch.

Clock Setting



Step① Long press clock icon till 1st digit is flashing.

Step② Apply single press for digit change. When desired digit is set, wait until the next digit is flashing.

Step③ Repeat **Step②** until all digits are set

Maintenance and Cleaning Recommendation

To avoid damage and optimize your product, please do not use anything abrasive to clean the surface. Cleaning it by rinsing with clean water and drying with a soft cotton cloth or sponge. Clean regularly to prevent the accumulation of dirt and tough stains.